



AZM170-02ZRI-B1-24VAC/DC

- Long life
- Compact design
- Manual release
- Double-insulated
- Individual coding
- High holding force
- 90 mm x 84 mm x 30 mm
- 1 Cable entry M 20 x 1.5
- IDC method of termination
- Particularly suitable for sliding doors
- Coding level "High" according to ISO 14119
- Interlock with protection against incorrect locking.

Data

Ordering data

Product type description	AZM 170-02ZRI-B1 24 VAC/DC
Article number (order number)	101140798
EAN (European Article Number)	4030661119861
eCl@ss number, Version 9.0	27-27-26-03

Approval - Standards

Certificates	cULus
	CCC
	EAC

General data

Product name	AZM 170i
Standards	EN 60947-5-1 BG-GS-ET-19
general information	Individual coding
Coding level according to ISO 14119	High
Active principle	electromechanical
Enclosure material	Plastic, glass-fibre reinforced thermoplastic, self-extinguishing
Material of the actuator	Stainless steel
Material of the contacts, electrical	Silver
Gross weight	292 g

General data - Features

Power to unlock	Yes
Manual release	Yes
Number of actuating directions	2
Number of safety contacts	2

Safety appraisal

Standards	ISO 13849-1
Mission Time	20 Year(s)

Safety appraisal - Safety outputs

B10d Normally-closed contact (NC) 2,000,000 Operations

Mechanical data

Actuating radius, minimum	140 mm
Mechanical life, minimum	1,000,000 Operations
Clamping force in accordance with ISO14119 F_{zh}	1,000 N
Latching force	30 N
positive break travel	11 mm
Positive break force, minimum	17 N
Actuating speed, maximum	2 m/s

Mechanical data - Connection technique

Terminal Connector	IDC method of termination
Cable section, minimum	1 x 0.75 mm ²
Cable section, maximum	1 x 1.0 mm ² , flexible

Mechanical data - Dimensions

Height of sensor	84 mm
Length of sensor	30 mm
Width of sensor	90 mm

Ambient conditions

Protection class	IP 67 to IEC/EN 60529
Ambient temperature, minimum	-25 °C
Ambient temperature, maximum	+60 °C

Ambient conditions - Insulation value

Rated impulse withstand voltage	4 kV
---------------------------------	------

Electrical data

Thermal test current	6 A
Rated control voltage	24 VAC/DC
Required rated short-circuit current to EN 60947-5-1	1,000 A
Electrical power consumption, maximum	10 W
Switching element	Opener (NC)
Note (Switching element)	Change-over contact with double break, type Zb or 2 NC or 3 NC or 4 NC contacts, with galvanically separated contact bridges
Switching principle	Creep circuit element
Switching frequency	1,000 /h

Electrical data - Safety contacts

Voltage, Utilisation category AC15	230 VAC
Current, Utilisation category AC-15	4 A
Voltage, Utilisation category DC13	24 VDC
Current, Utilisation category DC13	4 A

Other data

Note (applications)	sliding safety guard removable guard hinged safety guard
---------------------	----------------------------------------------------------------

Scope of delivery

Included in delivery	Slot sealing plugs
Delivery scope of Mounting material	Tamperproof screws

Notes

Note (General)	This type termination (IDC) method enables simple connection of flexible conductors without the need for the use of conductor ferrules
Note (Manual release)	bottom For manual release using M5 triangular key, available as accessory

Ordering code

Product type description:

AZM 170(1)-(2)Z(3)I(4)-(5)-(6)-(7) (8)

(1)

without IDC method of termination

SK Screw connection

(2)

11 1 NO contacts/1 NC contact

02 2 NC contact

(3)

without Latching force 5 N

R Latching force 30 N

I Individual coding

(4)

without Power to unlock

A Power to lock

(5)

without cable gland

ST M12 x 1 connector

(6)

B1 with actuator B1

B5 with actuator B5

B6L with actuator B6L

B6R with actuator B6R

(7)

without Manual release

2197 Manual release from side (Power to unlock)

1637 Gold-plated contacts

(8)

24VAC/DC Us 24 VAC/DC

110VAC Us 110 VAC

230VAC Us 230 VAC

(1)

11/11 1 NO contact, 1 NC contact / 1 NO contact 1, NC contact

11/02 1 NO contact, 1 NC contact / 2 NC contacts

12/00 1 NO contact, 2 NC contacts / -

12/11 1 NO contact, 2 NC contact / 1 NO contact 1, NC contact

12/02 1 NO contact, 2 NC contact / 2 NC contacts

02/01 2 NC contacts / 1 NC contact

02/10 2 NC contacts, - / 1 NO contact

(2)

without Latching force 5 N

R Latching force 30 N

(3)

without Power to unlock

A Power to lock

(4)

B1 with actuator B1

B5 with actuator B5

B6L with actuator B6L

B6R with actuator B6R

(5)

1637 Gold-plated contacts

(6)

2197 Manual release for Power to unlock

Pictures

Product picture (catalogue individual photo)



ID: kazm1fi3

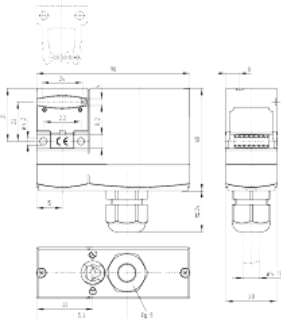
| 49,6 kB | .png | 74.083 x 93.486 mm - 210 x 265

Pixel - 72 dpi

| 595,8 kB | .jpg | 262.114 x 331.258 mm - 743 x 939

Pixel - 72 dpi

Dimensional drawing basic component



ID: kazm1gi3

| 195,9 kB | .jpg | 352.778 x 400.403 mm - 1000 x

1135 Pixel - 72 dpi

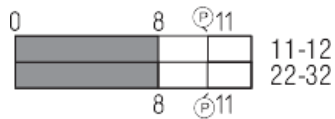
| 106,0 kB | .cdr |

| 6,2 kB | .png | 74.083 x 83.961 mm - 210 x 238 Pixel

- 72 dpi

Switch travel diagram

ID: kazm1s01



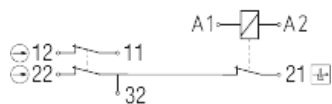
| 1,8 kB | .png | 74.083 x 26.458 mm - 210 x 75 Pixel - 72 dpi

| 19,5 kB | .cdr |

| 49,4 kB | .jpg | 352.778 x 125.236 mm - 1000 x 355 Pixel - 72 dpi

Diagram

ID: kazm1k11

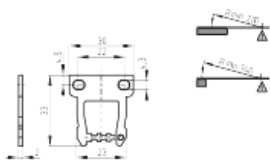


| 1,8 kB | .png | 74.083 x 23.989 mm - 210 x 68 Pixel - 72 dpi

| 7,1 kB | .jpg | 74.083 x 23.989 mm - 210 x 68 Pixel - 72 dpi

Dimensional drawing actuator

ID: 1az17b03

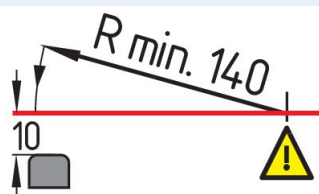


| 68,7 kB | .jpg | 352.778 x 245.181 mm - 1000 x 695 Pixel - 72 dpi

| 3,5 kB | .png | 74.083 x 51.506 mm - 210 x 146 Pixel - 72 dpi

| 28,1 kB | .cdr |

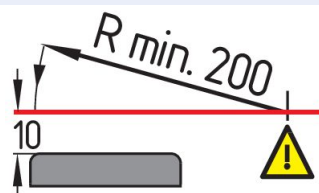
Actuating radius



ID: kaz17r06

| 19,8 kB | .cdr |

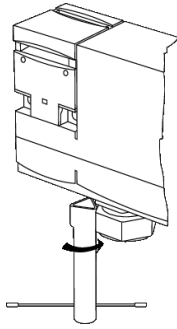
Actuating radius



ID: kaz17r05

| 19,8 kB | .cdr |

Operating principle

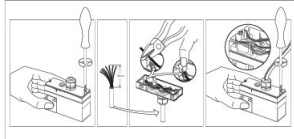


ID: kazm1a70

| 213,5 kB | .jpg | 352.778 x 656.519 mm - 1000 x 1861 Pixel - 72 dpi

| 6,5 kB | .png | 74.083 x 137.583 mm - 210 x 390 Pixel - 72 dpi

Assembly example



ID: kazm1m06

| 98,4 kB | .cdr |

K.A. Schmersal GmbH & Co. KG, Möddinghofe 3, D-42279 Wuppertal

The details and data referred to have been carefully checked. Images may diverge from original. Further technical data can be found in the manual. Technical amendments and errors possible.

Generated on 532021-01-26T10:05:53+01:001001Europe/BerlinTue, 26 Jan 2021 10:05:53

+010053amTuesday.26am31Europe/BerlinCET0501Europe/BerlinJanuary2021Tue, 26 Jan 2021 10:05:53

+010001am31