

BGL 80A-003-S49
Order code: BGL0025

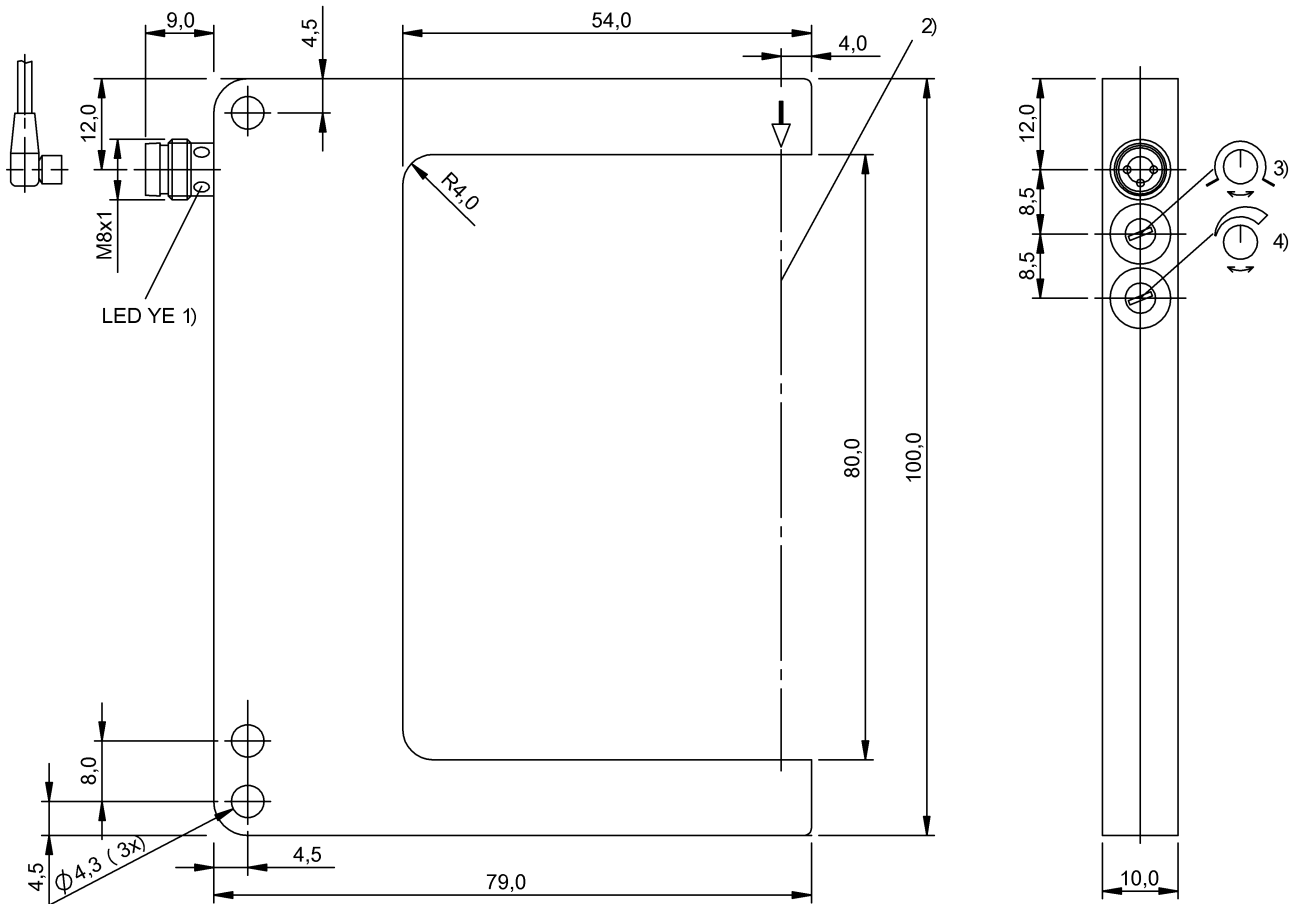
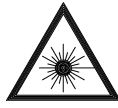
Slot sensor
 Series A
 80 mm

DC, direct current
 PNP (1X)
 NO/NC: dark-on/light-on
 5000 Hz
 Laser red light

LASER CLASS 1 per IEC 60825-1: 2003-10

BALLUFF

sensors worldwide



1) Output function 2) Optical axis 3) Light-on / Dark-on 4) Sensitivity

Basic data

Operating voltage UB DC	10.0 V... 30.0 V
Eff. operating voltage Ue DC	24.0 V
Ripple max. (% of Ue)	10 %
No-load current max. Io at Ue	20 mA
Polarity reversal protected	Yes
Rated insulation voltage Ui	75 V DC
Indicator	Output function - LED YE
Adjuster	Potentiometer, 270° (2x)
Setting	Sensitivity
	Light-on/dark-on
Ambient temperature Ta	-10 °C... 60 °C

Ambient light max.

5,000 Lux

Electrical data

Switching output	PNP (1X)
Switching function	NO/NC
Eff. operating current Ie	200 mA
Switching freq. f max. (at Ue)	5000 Hz
Turn on time ton max.	0.100 ms
Turn off time toff max.	0.100 ms
Voltage drop Ud max. (at Ie)	3.0 V
Hysteresis H max.	0.030 mm
Short circuit protected	Yes
Load capacitance max. (at Ue)	0.50 µF

Optical data

Principle of optical operation	Through-beam
Light type	Laser red light
Wavelength	655 nm
Laser Class per IEC 60825-1	1
Average power Po max.	< 390 µW (IEC 60825-1)
Light spot size, typical	Ø0.3 mm light exit
Beam characteristic	Collimated
Repeat accuracy lateral max.	10 µm
Smallest part, typical	0.10 mm

Mechanical data

Style	Slot, straight connection
Fork width	80 mm
Dimensions	10.0 mm x 88.0 mm x 100.0 mm
Mounting type	Screw M4
Housing material	GD-Zn
Surface protection	Painted
Sensing face material	Glass
Degree of protec. per IEC60529	IP67
Connection type	Connector

000000114391/158459/20121015

www.balluff.com

Balluff Germany: +49 7158 173-0, +49 7158 173-370
 Balluff USA: +1-800-543-8390
 Balluff China: +86 21 5089 9970

1 (2)
 Print Date: 18.02.2016
 Selection date: 18.02.2016

BGL 80A-003-S49
Order code: BGL0025

Slot sensor
Series A
80 mm

Connector type M8x1-S49

Approval

Approvals / Conformity CE
cULus

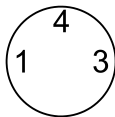
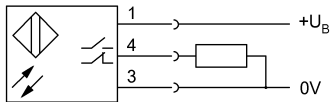
Remarks

Basic standard IEC 60947-5-2
The sensor is functional again after the overload has been



Definitions see general catalog

Subject to change without notice.



DC, direct current
PNP (1X)
NO/NC: dark-on/light-on
5000 Hz
Laser red light

eliminated.

Reference object (test target): Steel sheet metal, 50 x 50, thickness 0.5 mm, lateral approach.

Factory default setting for switching output: Normally open.

Only for NFPA 79 applications (machines with a supply voltage of maximum 600 volts). Device shall be connected only by using any R/C (CYJV2) cord, having suitable ratings.

For additional information, refer to user's guide.

Order accessories separately.

BALLUFF

sensors worldwide

000000114391/158459/20121015