

SETRON, Switch disconnecter 3LD, main switch, 3-pole, Iu: 160 A, Operating power / at AC-23 A at 400 V: 75 kW, front-mounted, knob-operated mechanism, black, 4-hole mounting of the handle



| Model  |                                |
|--|--------------------------------|
| product brand name   | SETRON                         |
| product designation  | 3LD Switch disconnecter        |
| design of the product  | Main switch                    |
| display version / for switch position indicator manual operation | 1 ON - 0 OFF                   |
| design of the operating mechanism                                | selector switch                |
| design of handle   | knob-operated mechanism, black |
| type of the driving mechanism / motor drive                      | No                             |
| General technical data   |                                |
| number of poles  | 3                              |
| type of device   | fixed mounting                 |
| type of switch   | front mounted                  |
| size of switch disconnecter                                      | 5                              |
| mechanical service life (switching cycles)                       |                                |
| • typical  | 100 000                        |
| electrical endurance (switching cycles)                          |                                |
| • at AC-23 A / at 690 V  | 6 000                          |

|  |           |
|--|-----------|
| I2t value / with closed switch / at 690 V / for combination switch + gG fuse / maximum             | 185 kA2.s |
| let-through I2t value / with closed switch / at 440 V / for combination switch + gG fuse / maximum | 185 kA2.s |
| operating frequency / maximum  | 50 1/h    |

## Voltage

|   |       |
|---|-------|
| insulation voltage / rated value  | 690 V |
| surge voltage resistance / rated value  | 8 kV  |
| operating current / at AC / rated value   | 160 A |
| operating voltage <ul style="list-style-type: none"> <li>at AC / at 50/60 Hz / rated value</li> </ul> | 690 V |

## Protection class

|                                    |               |
|------------------------------------|---------------|
| protection class IP                | IP65          |
| degree of protection NEMA rating   | 1, 3R, 4X, 12 |
| protection class IP / on the front | IP65          |

## Dissipation

|  |              |
|--|--------------|
| power loss [W] <ul style="list-style-type: none"> <li>for rated value of the current / at AC / in hot operating state / per pole</li> <li>per conductor / typical</li> </ul> | 36 W<br>36 W |
|--|--------------|

## Current

|  |   |
|--|---|
| operating current <ul style="list-style-type: none"> <li>at AC-23 A / at 690 V / rated value</li> <li>at AC-23 A / at 400 V / rated value</li> <li>at AC-22 A / at 690 V / rated value</li> <li>at AC-21 / at 690 V / rated value</li> <li>at AC-21 A / at 240 V / rated value</li> <li>at AC-21 A / at 440 V / rated value</li> <li>at AC-22 A / at 240 V / rated value</li> <li>at AC-22 A / at 440 V / rated value</li> <li>at AC-23 A / at 240 V / rated value</li> <li>at AC-23 A / at 440 V / rated value</li> </ul> | 47 A<br>132 A<br>140 A<br>160 A<br>160 A<br>160 A<br>140 A<br>140 A<br>140 A<br>132 A |
| operating current / of upstream fuse / rated value   | 160 A   |
| let-through current / with closed switch <ul style="list-style-type: none"> <li>at 440 V / for combination switch + gG fuse / maximum</li> <li>at 690 V / for combination switch + gG fuse / maximum permissible</li> </ul>  | 15 kA<br>15 kA  |
| short-time withstand current (Icw) <ul style="list-style-type: none"> <li>limited to 1 s / rated value</li> <li>at 690 V / limited to 1 s / rated value</li> </ul>   | 4 000 A<br>4 000 A  |

| Main circuit  |       |
|---|-------|
| operating frequency   |       |
| • initial value   | 50 Hz |
| • full-scale value  | 60 Hz |
| operating power   |       |
| • at AC-23 A / at 240 V / rated value                       | 75 kW |
| • at AC-23 A / at 400 V / at 50/60 Hz / rated value         | 75 kW |
| • at AC-23 A / at 400 V / rated value                       | 75 kW |
| • at AC-23 A / at 440 V / rated value                       | 75 kW |
| • at AC-23 A / at 690 V / rated value                       | 45 kW |
| • at AC-3 / at 240 V / rated value                          | 35 kW |
| • at AC-3 / at 400 V / rated value                          | 50 kW |
| • at AC-3 / at 690 V / rated value                          | 37 kW |
| operating current / rated value                             | 160 A |
| Auxiliary circuit   |       |
| number of CO contacts / for auxiliary contacts              | 0     |
| number of NC contacts / for auxiliary contacts              | 0     |
| number of NO contacts / for auxiliary contacts              | 0     |
| operating voltage / of auxiliary contacts / at AC / maximum | 500 V |
| continuous current / of the auxiliary contact / rated value | 10 A  |
| insulation voltage / of the auxiliary switch / rated value  | 500 V |
| Suitability   |       |
| suitability for use   |       |
| • main switch   | Yes   |
| • switch disconnecter                                       | Yes   |
| • EMERGENCY OFF switch                                      | No    |
| • safety switch   | Yes   |
| • maintenance/repair switch                                 | Yes   |
| Appearance  |       |
| color / of the actuating element                            | black |
| Product details   |       |
| • product function / can be locked into OFF position        | Yes   |
| number of bracket locks / maximum                           | 3     |
| hasp thickness / of the bracket locks / minimum             | 4 mm  |
| hasp thickness / of the bracket locks / maximum             | 6 mm  |
| product extension / optional                                |       |
| • motor drive   | No    |

- voltage trigger

No

## Short circuit

conditional short-circuit current / with line-side fuse protection

- at 690 V / by gG fuse / rated value

50 kA

## according UL

operating current / at AC / according to UL 508/UL 60947-4-1 / rated value

180 A

operating voltage / at AC / at 50/60 Hz / according to UL 508/UL 60947-4-1 / rated value

600 V

active power [hp] / at AC / at 480 V / according to UL 508/UL 60947-4-1 / rated value

75

active power [hp] / at AC / at 600 V / according to UL 508/UL 60947-4-1 / rated value

50

short-time withstand current (SCCR) / at 600 V / according to UL 508/UL 60947-4-1

10 kA

continuous current / of upstream fuse / according to UL / rated value

200 A

type of fuse / according to UL

RK5

## Number

number of connectable NC contacts / for auxiliary contacts / attachable / maximum

3

number of connectable NO contacts / for auxiliary contacts / attachable / maximum

3

number of connectable CO contacts / for auxiliary contacts / attachable / maximum

0

## Connections

AWG number / as coded connectable conductor cross section / solid

- minimum
- maximum

1

4/0

type of connectable conductor cross-sections / for copper conductor

- solid
- finely stranded / with core end processing
- stranded

1x (16 ... 185mm<sup>2</sup>)

1x (16...150mm<sup>2</sup>)

1x (16...185mm<sup>2</sup>)

type of connectable conductor cross-sections / for auxiliary contacts

- solid
- finely stranded / with core end processing
- stranded

lateral auxiliary switch 2x (0,75 ... 2,5mm<sup>2</sup>), 1x 4mm<sup>2</sup>; front auxiliary switch 1x (0,75 ... 2,5mm<sup>2</sup>)

lateral auxiliary switch 2x (0,75 ... 1,5mm<sup>2</sup>), 1x 2,5mm<sup>2</sup>; front auxiliary switch 1x 2,5mm<sup>2</sup>

lateral auxiliary switch 2x (0,75 ... 2,5mm<sup>2</sup>), 1x 4mm<sup>2</sup>; front auxiliary switch 1x (0,75 ... 2,5mm<sup>2</sup>)

|  |                                      |
|--|--------------------------------------|
| type of electrical connection  |                                      |
| <ul style="list-style-type: none"> <li>• for main current circuit</li> <li>• for auxiliary contacts</li> </ul> | box terminal<br>connection terminals |

## Requirements

|  |   |
|--|---|
| design of the fuse link  |   |
| <ul style="list-style-type: none"> <li>• for short-circuit protection of the main circuit / required</li> <li>• for short-circuit protection of the auxiliary switch / required</li> </ul> | fuse gL/gG: 160 A<br><br>fuse gL/gG: 10 A |

## Mechanical Design





|  |                                     |
|--|-------------------------------------|
| height   | 169 mm                              |
| width  | 112 mm                              |
| depth  | 94 mm                               |
| mounting type  | Built-in unit fixed-mounted version |
| <ul style="list-style-type: none"> <li>• mounting type / front mounting with 4-hole attachment</li> </ul>  | Yes                                 |
| <ul style="list-style-type: none"> <li>• mounting type / front mounting with central attachment</li> </ul> | No                                  |
| <ul style="list-style-type: none"> <li>• mounting type / rail mounting</li> </ul>                          | No                                  |
| net weight   | 2 089 g                             |

## Environmental conditions

|  |                 |
|--|-----------------|
| ambient temperature / during operation   |                 |
| <ul style="list-style-type: none"> <li>• minimum</li> <li>• maximum</li> </ul> | -25 °C<br>55 °C |
| ambient temperature / during storage / minimum                                 | -25 °C          |

## Certificates

|  |         |
|--|---------|
| reference code   |         |
| <ul style="list-style-type: none"> <li>• acc. to DIN EN 61346-2</li> <li>• acc. to DIN EN 81346-2</li> </ul> | S<br>SF |

| General Product Approval  |   |   | Declaration of Conformity   | Test Certificates                                  |  |
|---|---|---|---|--|--|
|  |  |  |  | <a href="#">Type Test Certificates/Test Report</a> | <a href="#">Special Test Certificate</a> |
| CCC   | CSA   | UL  | EG-Konf.  |  |  |

| other                                       |
|---|
| <a href="#">Environmental Conformations</a> |

#### Further information

**Information- and Downloadcenter (Catalogs, Brochures,...)**

<http://www.siemens.com/lowvoltage/catalogs>

**Industry Mall (Online ordering system)**

<https://mall.industry.siemens.com/mall/en/en/Catalog/product?mlfb=3LD2305-0TK11>

**Service&Support (Manuals, Certificates, Characteristics, FAQs,...)**

<https://support.industry.siemens.com/cs/ww/en/ps/3LD2305-0TK11>

**Image database (product images, 2D dimension drawings, 3D models, device circuit diagrams, ...)**

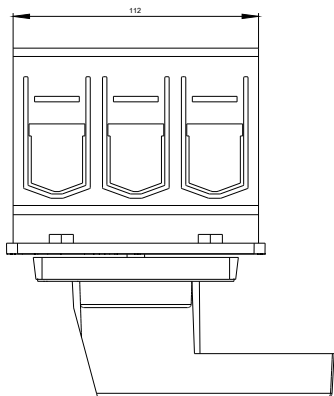
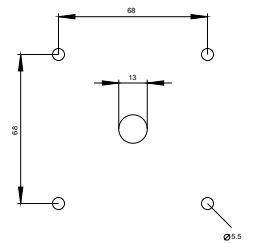
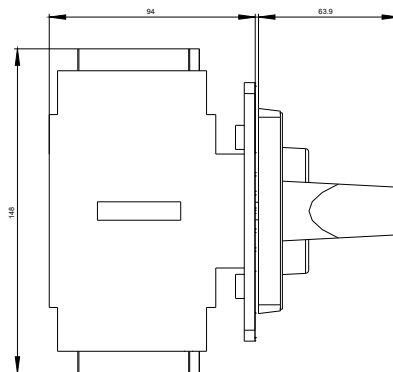
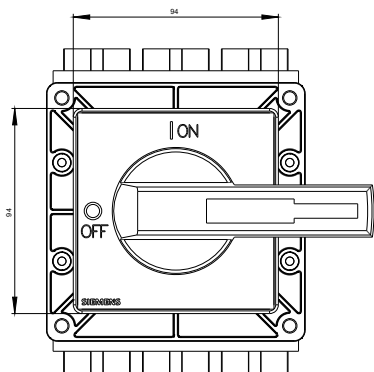
[http://www.automation.siemens.com/bilddb/cax\\_en.aspx?mlfb=3LD2305-0TK11](http://www.automation.siemens.com/bilddb/cax_en.aspx?mlfb=3LD2305-0TK11)

**CAX-Online-Generator**

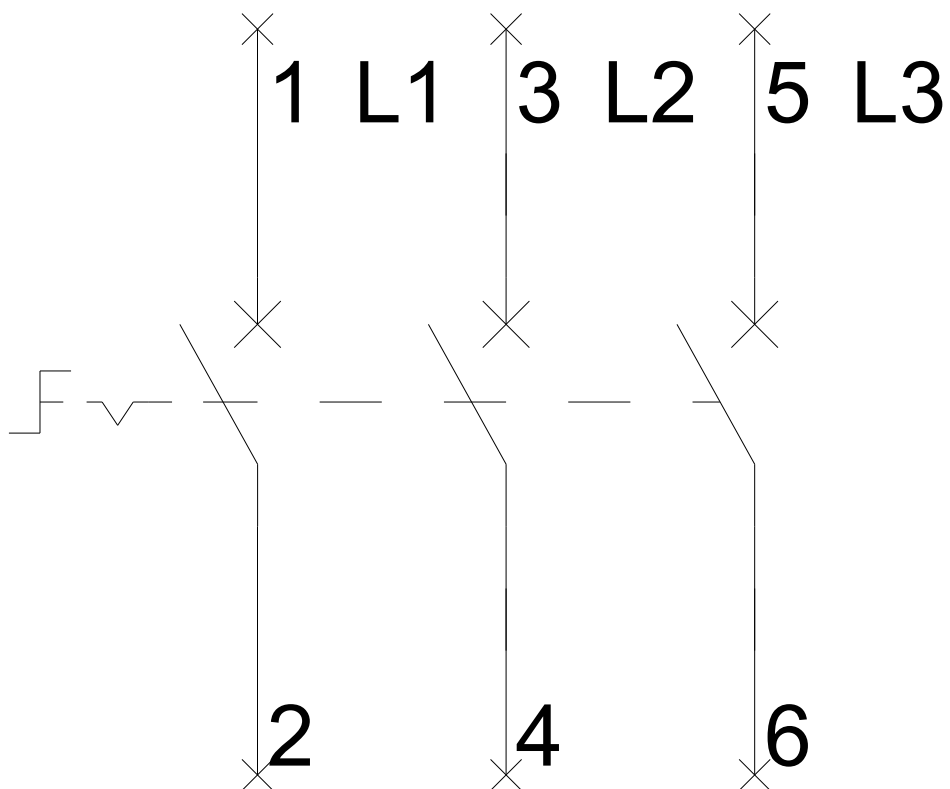
<http://www.siemens.com/cax>

**Tender specifications**

<http://www.siemens.com/specifications>



**-Q1**



-CI

