

SETRON, Switch disconnecter 3LD, main switch, 3-pole, Iu: 32 A, Operating power / at AC-23 A at 400 V: 11.5 kW, floor mounting with door coupling, rotary operating mechanism, black, central mounting 22.5 mm of the handle



Model	
product brand name	SETRON
product designation	3LD Switch disconnecter
design of the product	Main switch
display version / for switch position indicator manual operation	1 ON - 0 OFF
design of the operating mechanism	Short rotary knob
design of handle	rotary operating mechanism, black
type of the driving mechanism / motor drive	No

General technical data	
number of poles	3
type of device	fixed mounting
type of switch	Floor mounting with door coupling
size of switch disconnecter	2
mechanical service life (switching cycles)	
• typical	100 000
electrical endurance (switching cycles)	
• at AC-23 A / at 690 V	6 000

I2t value / with closed switch / at 690 V / for combination switch + gG fuse / maximum	9 kA2.s
let-through I2t value / with closed switch / at 440 V / for combination switch + gG fuse / maximum	9 kA2.s
operating frequency / maximum	50 1/h

### Voltage

insulation voltage / rated value	690 V
surge voltage resistance / rated value	6 kV
operating current / at AC / rated value	32 A
operating voltage <ul style="list-style-type: none"> <li>at AC / at 50/60 Hz / rated value</li> </ul>	690 V

### Protection class

protection class IP	IP65
degree of protection NEMA rating	1, 3R, 4X, 12
protection class IP / on the front	IP65

### Dissipation

power loss [W] <ul style="list-style-type: none"> <li>for rated value of the current / at AC / in hot operating state / per pole</li> <li>per conductor / typical</li> </ul>	1.8 W 1.8 W
--	----------------

### Current

operating current <ul style="list-style-type: none"> <li>at AC-23 A / at 690 V / rated value</li> <li>at AC-23 A / at 400 V / rated value</li> <li>at AC-22 A / at 690 V / rated value</li> <li>at AC-21 / at 690 V / rated value</li> <li>at AC-21 A / at 240 V / rated value</li> <li>at AC-21 A / at 440 V / rated value</li> <li>at AC-22 A / at 240 V / rated value</li> <li>at AC-22 A / at 440 V / rated value</li> <li>at AC-23 A / at 240 V / rated value</li> <li>at AC-23 A / at 440 V / rated value</li> </ul>	13 A 22 A 32 A 32 A 32 A 32 A 32 A 32 A 22 A 22 A
operating current / of upstream fuse / rated value	40 A
let-through current / with closed switch <ul style="list-style-type: none"> <li>at 440 V / for combination switch + gG fuse / maximum</li> <li>at 690 V / for combination switch + gG fuse / maximum permissible</li> </ul>	4.5 kA 4.5 kA
short-time withstand current (Icw) <ul style="list-style-type: none"> <li>limited to 1 s / rated value</li> <li>at 690 V / limited to 1 s / rated value</li> </ul>	640 A 640 A

Main circuit	
operating frequency	
<ul style="list-style-type: none"> <li>initial value</li> </ul>	50 Hz
<ul style="list-style-type: none"> <li>full-scale value</li> </ul>	60 Hz
operating power	
<ul style="list-style-type: none"> <li>at AC-23 A / at 240 V / rated value</li> </ul>	6 kW
<ul style="list-style-type: none"> <li>at AC-23 A / at 400 V / at 50/60 Hz / rated value</li> </ul>	11.5 kW
<ul style="list-style-type: none"> <li>at AC-23 A / at 400 V / rated value</li> </ul>	11.5 kW
<ul style="list-style-type: none"> <li>at AC-23 A / at 440 V / rated value</li> </ul>	11.5 kW
<ul style="list-style-type: none"> <li>at AC-23 A / at 690 V / rated value</li> </ul>	11.5 kW
<ul style="list-style-type: none"> <li>at AC-3 / at 240 V / rated value</li> </ul>	5.5 kW
<ul style="list-style-type: none"> <li>at AC-3 / at 400 V / rated value</li> </ul>	9.5 kW
<ul style="list-style-type: none"> <li>at AC-3 / at 690 V / rated value</li> </ul>	9.5 kW
operating current / rated value	32 A

Auxiliary circuit	
number of CO contacts / for auxiliary contacts	0
number of NC contacts / for auxiliary contacts	0
number of NO contacts / for auxiliary contacts	0
operating voltage / of auxiliary contacts / at AC / maximum	500 V
continuous current / of the auxiliary contact / rated value	10 A
insulation voltage / of the auxiliary switch / rated value	500 V

Suitability	
suitability for use	
<ul style="list-style-type: none"> <li>main switch</li> </ul>	Yes
<ul style="list-style-type: none"> <li>switch disconnecter</li> </ul>	Yes
<ul style="list-style-type: none"> <li>EMERGENCY OFF switch</li> </ul>	No
<ul style="list-style-type: none"> <li>safety switch</li> </ul>	Yes
<ul style="list-style-type: none"> <li>maintenance/repair switch</li> </ul>	Yes

Appearance	
color / of the actuating element	black

Product details	
<ul style="list-style-type: none"> <li>product function / can be locked into OFF position</li> </ul>	Yes
number of bracket locks / maximum	3
hasp thickness / of the bracket locks / minimum	4 mm
hasp thickness / of the bracket locks / maximum	8 mm
product extension / optional	
<ul style="list-style-type: none"> <li>motor drive</li> </ul>	No

- voltage trigger

No

### Short circuit

conditional short-circuit current / with line-side fuse protection

- at 690 V / by gG fuse / rated value

50 kA

### according UL

operating current / at AC / according to UL 508/UL 60947-4-1 / rated value

32 A

operating voltage / at AC / at 50/60 Hz / according to UL 508/UL 60947-4-1 / rated value

600 V

active power [hp] / at AC / at 480 V / according to UL 508/UL 60947-4-1 / rated value

20

active power [hp] / at AC / at 600 V / according to UL 508/UL 60947-4-1 / rated value

20

short-time withstand current (SCCR) / at 600 V / according to UL 508/UL 60947-4-1

5 kA

continuous current / of upstream fuse / according to UL / rated value

80 A

type of fuse / according to UL

RK5

### Number

number of connectable NC contacts / for auxiliary contacts / attachable / maximum

3

number of connectable NO contacts / for auxiliary contacts / attachable / maximum

5

number of connectable CO contacts / for auxiliary contacts / attachable / maximum

0

### Connections

AWG number / as coded connectable conductor cross section / solid

- maximum
- minimum

8

14

type of connectable conductor cross-sections / for copper conductor

- solid
- finely stranded / with core end processing
- stranded

1x (1,5...16mm<sup>2</sup>)

1x (1,5...10mm<sup>2</sup>)

1x (1,5...16mm<sup>2</sup>)

type of connectable conductor cross-sections / for auxiliary contacts

- solid
- finely stranded / with core end processing
- stranded

lateral auxiliary switch 2x (0,75 ... 2,5mm<sup>2</sup>), 1x 4mm<sup>2</sup>; front auxiliary switch 1x (0,75 ... 2,5mm<sup>2</sup>)

lateral auxiliary switch 2x (0,75 ... 1,5mm<sup>2</sup>), 1x 2,5mm<sup>2</sup>; front auxiliary switch 1x 2,5mm<sup>2</sup>

lateral auxiliary switch 2x (0,75 ... 2,5mm<sup>2</sup>), 1x 4mm<sup>2</sup>; front auxiliary switch 1x (0,75 ... 2,5mm<sup>2</sup>)

type of electrical connection	
<ul style="list-style-type: none"> <li>• for main current circuit</li> <li>• for auxiliary contacts</li> </ul>	box terminal connection terminals

### Requirements

design of the fuse link	
<ul style="list-style-type: none"> <li>• for short-circuit protection of the main circuit / required</li> <li>• for short-circuit protection of the auxiliary switch / required</li> </ul>	fuse gL/gG: 40 A  fuse gL/gG: 10 A

### Mechanical Design

height	84 mm
width	67 mm
depth	451.5 mm
mounting type	Built-in unit fixed-mounted version
<ul style="list-style-type: none"> <li>• mounting type / front mounting with 4-hole attachment</li> </ul>	No
<ul style="list-style-type: none"> <li>• mounting type / front mounting with central attachment</li> </ul>	Yes
<ul style="list-style-type: none"> <li>• mounting type / rail mounting</li> </ul>	Yes
net weight	410 g

### Environmental conditions

ambient temperature / during operation	
<ul style="list-style-type: none"> <li>• minimum</li> <li>• maximum</li> </ul>	-25 °C 55 °C
ambient temperature / during storage / minimum	-25 °C

### Certificates

reference code	
<ul style="list-style-type: none"> <li>• acc. to DIN EN 61346-2</li> <li>• acc. to DIN EN 81346-2</li> </ul>	S SF

General Product Approval	Declaration of Conformity
--------------------------	---------------------------



CCC



CSA



UL



VDE

[Miscellaneous](#)



EG-Konf.

Test Certificates	Shipping Approval	other
-------------------	-------------------	-------

[Special Test Certificate](#)



LRS



PRS

[Environmental Confirmations](#)

## Further information

### Information- and Downloadcenter (Catalogs, Brochures,...)

<http://www.siemens.com/lowvoltage/catalogs>

### Industry Mall (Online ordering system)

<https://mall.industry.siemens.com/mall/en/en/Catalog/product?mlfb=3LD2244-0TK51>

### Service&Support (Manuals, Certificates, Characteristics, FAQs,...)

<https://support.industry.siemens.com/cs/ww/en/ps/3LD2244-0TK51>

### Image database (product images, 2D dimension drawings, 3D models, device circuit diagrams, ...)

[http://www.automation.siemens.com/bilddb/cax\\_en.aspx?mlfb=3LD2244-0TK51](http://www.automation.siemens.com/bilddb/cax_en.aspx?mlfb=3LD2244-0TK51)

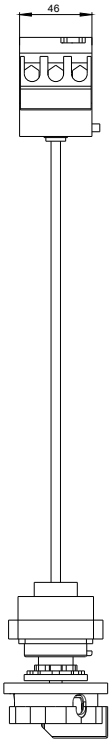
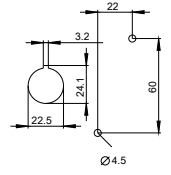
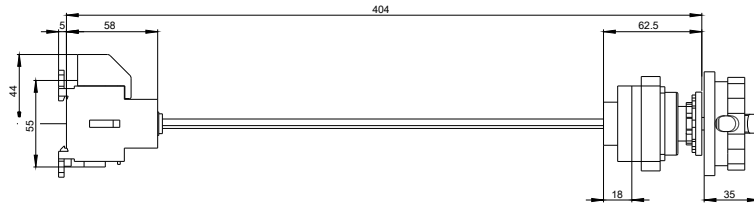
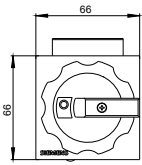
### CAX-Online-Generator

<http://www.siemens.com/cax>

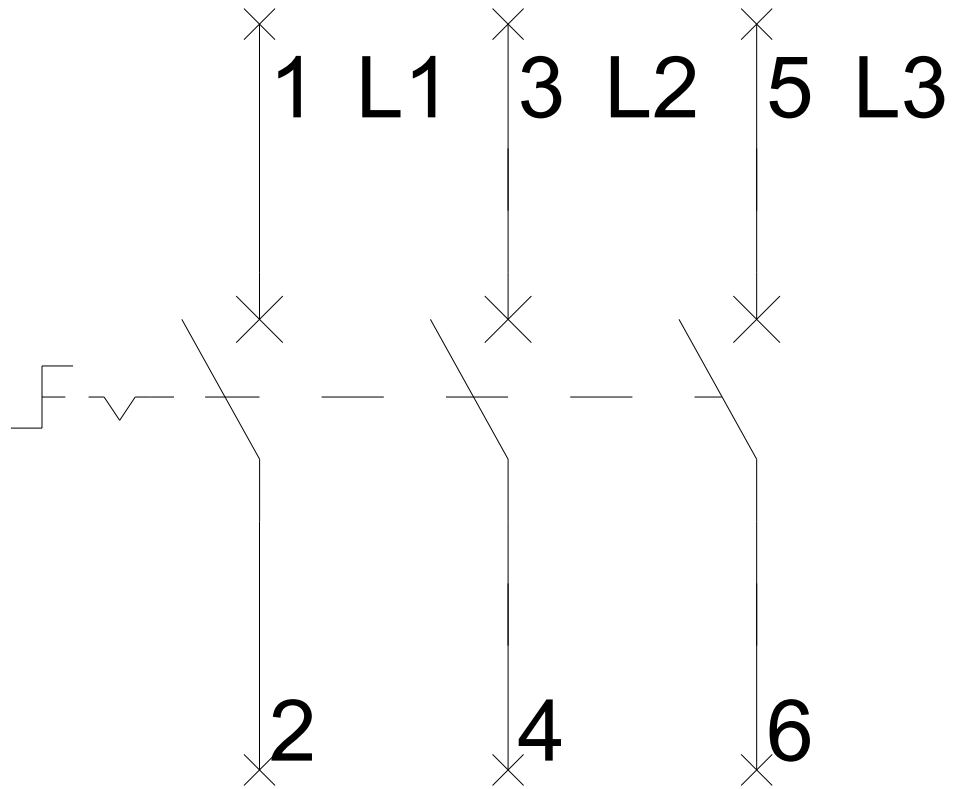
### Tender specifications

<http://www.siemens.com/specifications>

Tuer/ Door Base/ Plancher/  
Puerta/ Porta Base/ Pavimento/ Fundo



**-Q1**





# -CI

