

Position switch in compact design 40 mm wide with connection cable
2 m Snap-action contacts 1 NO+1 NC Rounded plunger with central
mounting



product brand name	SIRIUS
product designation	Mechanical position switches
product type designation	3SE5
suitability for use safety switch	Yes

General technical data

product function	
<ul style="list-style-type: none"> positive opening 	Yes
insulation voltage	
<ul style="list-style-type: none"> rated value 	400 V
degree of pollution	3
surge voltage resistance rated value	4 kV
protection class IP	IP67
shock resistance	
<ul style="list-style-type: none"> acc. to IEC 60068-2-27 	30g / 11 ms
vibration resistance	
<ul style="list-style-type: none"> acc. to IEC 60068-2-6 	0.35 mm/5g
mechanical service life (switching cycles)	
<ul style="list-style-type: none"> typical 	10 000 000
electrical endurance (switching cycles)	

• at AC-15 at 230 V typical	100 000
electrical endurance (switching cycles) with contactor 3RH11, 3RT1016, 3RT1017, 3RT1024, 3RT1025, 3RT1026 typical	500 000
Electrical operating cycles in one hour with contactor 3RH11, 3RT1016, 3RT1017, 3RT1024, 3RT1025, 3RT1026	1 800
thermal current	10 A
material of the enclosure of the switch head	metal
reference code acc. to DIN EN 81346-2	B
active principle	mechanical
repeat accuracy	0.05 mm
minimum actuating force in activation direction	20 N
length of the sensor	60 mm
width of the sensor	40 mm
design of the switching contact	mechanical
operating frequency rated value	50 ... 60 Hz
number of NC contacts for auxiliary contacts	1
number of NO contacts for auxiliary contacts	1
• operating current at AC-15 at 125 V rated value	6 A
• operational current at AC-15 at 230 V rated value	3 A
operating current at DC-13	
• at 125 V rated value	0.55 A
• at 230 V rated value	0.27 A
design of the interface for safety-related communication	without

Enclosure

design of the housing	block
material of the enclosure	metal
coating of the enclosure	painted
design of the housing acc. to standard	No
material of cable sheath	PVC

Drive Head

design of the operating mechanism	rounded plunger
shape of the switch head	rounded
design of the switching function	snap-action contact
circuit principle	snap-action contacts
number of switching contacts safety-related	1

Connections/ Terminals

type of electrical connection	cable connection 5m x 0.75 mm ² PVC
--------------------------------------	--

Communication/ Protocol

design of the interface	without
-------------------------	---------

Ambient conditions

explosion protection category for dust	none
--	------

Installation/ mounting/ dimensions

mounting position	any
• mounting type	screw fixing

Certificates/ approvals

General Product Approval	Declaration of Conformity	other
--------------------------	---------------------------	-------



CCC



EG-Konf.

[Miscellaneous](#)

[Confirmation](#)

Further information

Information- and Downloadcenter (Catalogs, Brochures,...)

<https://www.siemens.com/ic10>

Industry Mall (Online ordering system)

<https://mall.industry.siemens.com/mall/en/en/Catalog/product?mlfb=3SE5423-0CC21-1EA2>

Cax online generator

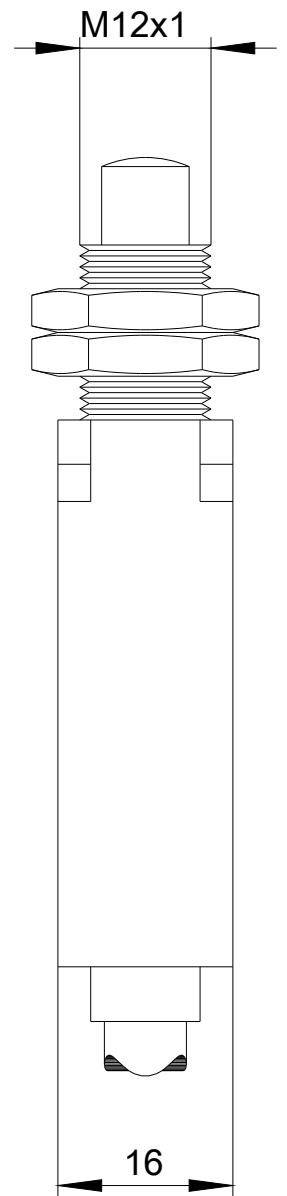
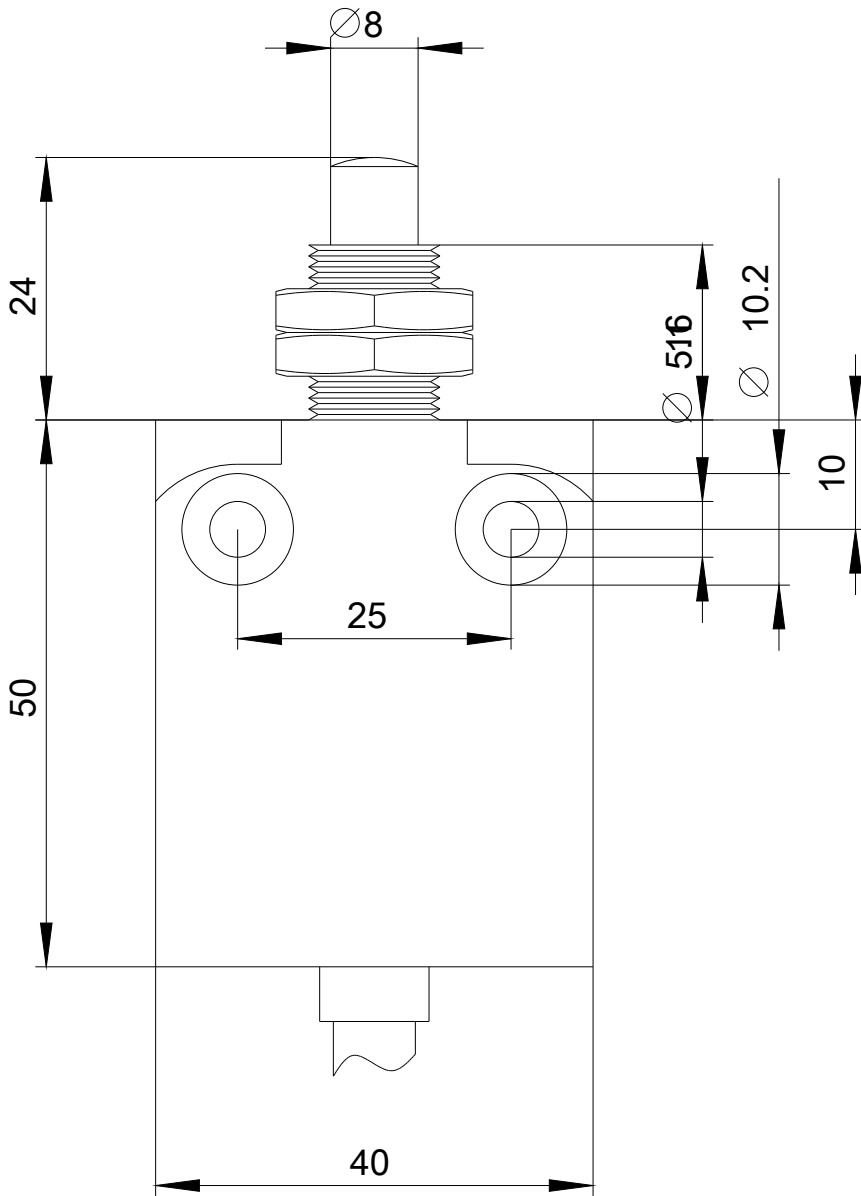
<http://support.automation.siemens.com/WW/CAXorder/default.aspx?lang=en&mlfb=3SE5423-0CC21-1EA2>

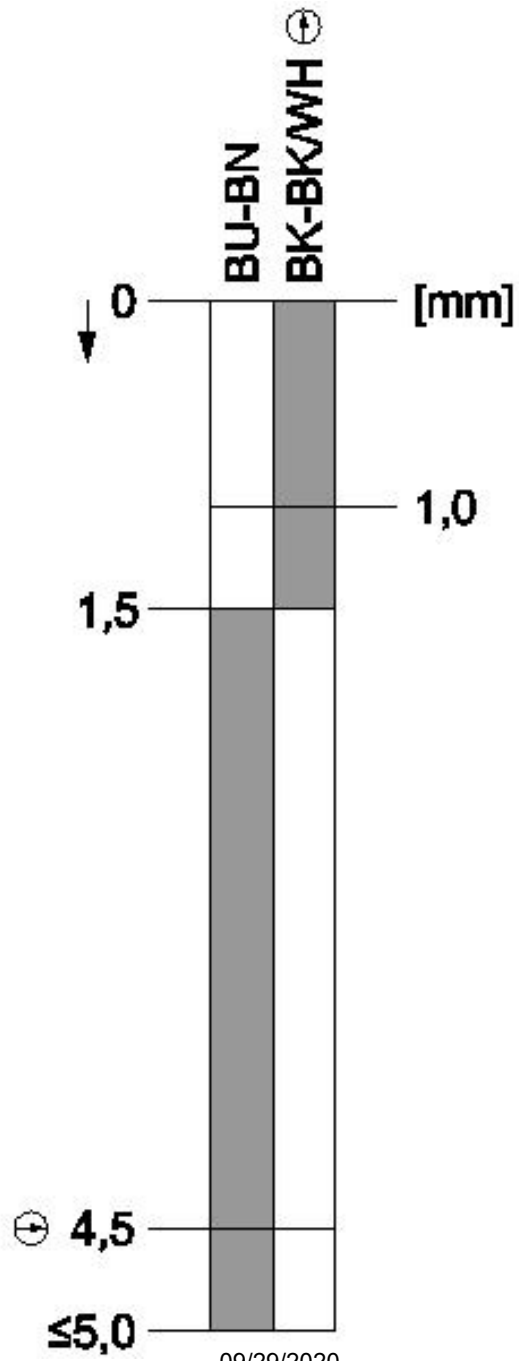
Service&Support (Manuals, Certificates, Characteristics, FAQs,...)

<https://support.industry.siemens.com/cs/ww/en/ps/3SE5423-0CC21-1EA2>

Image database (product images, 2D dimension drawings, 3D models, device circuit diagrams, EPLAN macros, ...)

http://www.automation.siemens.com/bilddb/cax_de.aspx?mlfb=3SE5423-0CC21-1EA2&lang=en





last modified:

09/29/2020