

Data sheet Actuator.

Part No.: 84-5321.2B20

Technical data

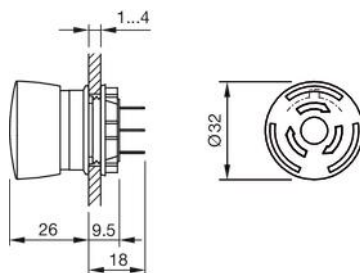


Terminal	Plug-in terminal
Illuminative colour	Red
Operating voltage	5 - 30 V DC
Operation current	9,7 - 12,4 mA
Lens illumination	illuminative
Lens colour	Red
Lens shape	mushroom-head
Lens material	Plastic
Lens optics	opaque
Housing colour	Yellow
Housing material	Plastic
Weight	0.028 kg
Contacts normally close	1 NC
Contact material	Gold-plated silver
Illumination colour	Red
Material	Plastic
Switching action	Maintained
Switching voltage	250 V
Switching system	Slow-make switching element

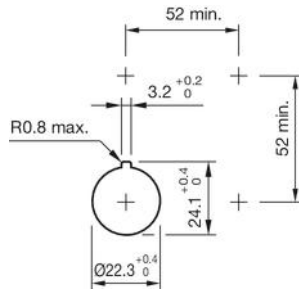
Hints

- Twist to unlock clockwise
 - Luminosity and wave length variations caused by LED manufacturing processes may cause slight differences regarding the illumination.
 - Foolproof according to EN IEC 60947-5-5
 - Lens colour Red
- Product attributes
- Switching position ring green

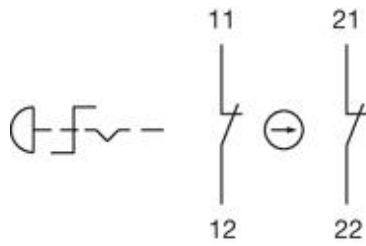
Dimensions



Mounting cut-outs



Wiring diagrams



Component layouts

