

ST 130/69/23*

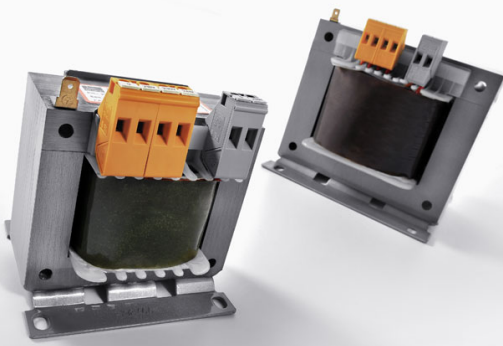
Control-, safety isolating- and isolating transformer

- Screw type terminals
- Compact design
- Screw mounting

Low inrush current control, safety isolating and isolating transformer to IEC 61558-2-2; 2-4, DIN EN 61558-2-2; 2-4, VDE 0570 part 2-2; 2-4; 2-6, UL 506, CSA 22.2

C-UL-US, CSA 22.2 and ENEC 10 (VDE) Approvals

*without C-UL-US Approval



ST 130/69/23*

Control-, safety isolating- and isolating transformer



Input data

| | |
|--------------------------|------------|
| Input voltage | 690 V |
| Tappings Input (\pm) | 20 V |
| Frequency range | 50 - 60 Hz |

Output data

| | |
|---------------------------------|--------|
| Output voltage | 230 V |
| No-load voltage (ca. x factor) | 1.10 |
| Efficiency | 86 % |
| Power VDE (DB $\cos \phi=1$) | 130 VA |
| Power VDE (KB $\cos \phi=0.5$) | 300 VA |
| Power UL | 130 VA |

Standards and security

| | |
|----------------------------|------------------------|
| Approvals | C-UL-US, ENEC 10 (VDE) |
| Protection index | IP 00 |
| Safety class (prepared) | I |
| Cooling method | by self-cooling |
| Ambient temperature max. | 40 °C |
| Class of Insulation System | VDE=B, UL=105 |
| Test voltage | min. 2500 V, 50 Hz |

Mechanical data

| | |
|---------------|------------------------------------|
| Type | open type |
| Terminals | screw-type terminals, PE 6,3 x 0,8 |
| Fixing method | Mounting brackets |
| Fixing screws | M5 |
| Weight | 2.40 kg |

Order numbers

| | |
|--------------|---------------|
| Order Number | ST 130/69/23* |
|--------------|---------------|

BLOCK Transformatoren-Elektronik GmbH

Max-Planck-Straße 36-46

27283 Verden

Germany

Phone +49 4231 678-0

Fax +49 4231 678-177