

Analogue TMR 48

→ TMR 48

- Multi-function or mono-function
- Multi-range from 0.02 s to 300 h
- Multi-voltage 12 to 240 VDC / 24 to 240 V AC
- Time setting displayed on dial
- 2 changeover relays 5 A / 250 VAC
- Display of power and output states by 2 LEDs
- Housing 48 x 48 mm



Specifications

| Type | Functions | Relay outputs | Max. breaking current | Supply voltage | Connection | Code |
|----------|------------------------------|---|-----------------------|------------------------------|----------------|------------|
| TMR 48 U | A, B, C, W, G, Ac, Bw | 2 timed changeover | 5 A / 250 VAC | 12 → 240 VDC 24 → 240 VAC | Plug-in 11 way | 88 886 016 |
| TMR 48 A | A | 2 timed changeover | 5 A / 250 VAC | 12 → 240 VDC 24 → 240 VAC | Plug-in 8 way | 88 886 106 |
| TMR 48 X | A1, A2, H1, H2, Q1, Q2, D-Di | 2 changeover or 1 timed and 1 instantaneous | 5 A / 250 VAC | 12 → 240 VDC 24 → 240 VAC | Plug-in 8 way | 88 886 116 |
| TMR 48 L | L, Li, G, Gi | 2 timed changeover | 5 A / 250 VAC | 12 → 240 VDC 24 → 240 VAC | Plug-in 11 way | 88 886 516 |

Accessories

| | Code |
|--|-------------------|
| 11-pin connector base | 25 622 080 |
| 8-pin connector base | 25 622 130 |
| Spring clips (packet of 2) | 79 237 740 |
| Black front face. For grey and other colours | please consult us |

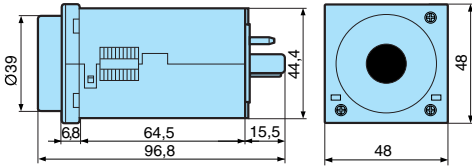
General characteristics

| | |
|---|--|
| Supply voltage Un | 12 → 240 VDC 24 → 240 V AC |
| Operating range | ± 10 % DC supply - 15 % / + 10 % AC supply |
| Frequency | 50 / 60 Hz |
| Power consumption | 4.8 VA / 230 VAC 2.5 VA / 110 VAC 1.1 VA / 24 VAC 0.5 W / 24 VDC 0.8 W / 12 VDC |
| Timing ranges (14 available options) | 0,02 → 1,2 s 0,2 → 12 min. 0,2 → 12 h 0,05 → 3 s 0,5 → 30 min. 0,5 → 30 h 0,2 → 12 s 2 → 120 min. 2 → 120 h 0,5 → 30 s 5 → 300 min. 5 → 300 h 2 → 120 s 5 → 300 s |
| Repetition accuracy | ± 0.5 % of full scale at 25°C (typical with constant parameters) |
| Temperature drift according to CEI/EN 61812 | ± 0.05 % of full scale |
| Display accuracy | ± 5 % of full scale at 25°C |
| Minimum pulse duration START | 25 ms |
| Minimum pulse duration GATE | 60 ms |
| Minimum pulse duration RESET | 60 ms |
| Start-up delay after power cut (START linked) | 50 ms |
| Output specification | |
| Nominal rating | 2 x 5 A |
| Nominal insulation voltage | 250 VAC |
| Rated power (resistive load) | 2000 VA |
| Minimum current | 10 mA |
| Electrical life at I max. 250 V AC resistive (number of operations) | 10 ⁵ |
| Mechanical life (operations) | 30 x 10 ⁶ |
| Function and use | |
| Display of output state by 2 LEDs | Green : power ON, flashing during timing Yellow : ON output ON, OFF output OFF |
| Operating temperature range (°C) | -20 → +55 |
| Storage temperature range (°C) | -40 → +70 |
| Breakdown voltage | 2 KV |
| Protection class (IEC 60529) - Panel-mounted | IP 50 |
| Protection class (IEC 60529) - Casing | IP 40 |
| Material housing | self-extinguishing |
| Weight (g) | 140 |

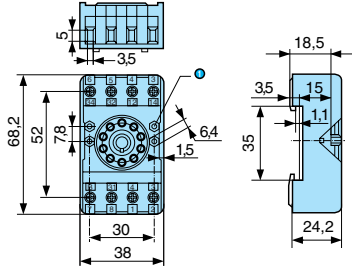
To order, see page 6

Dimensions

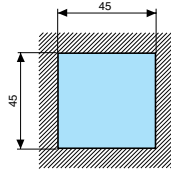
TMR 48 U / A / X / L



Connector base - 25 622 080 - 25 622 130

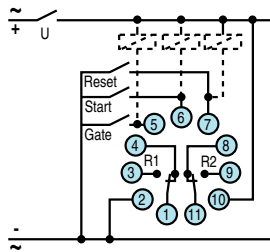


Panel cut-out

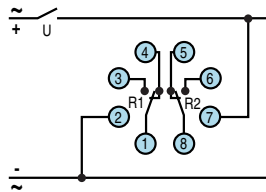


Connections

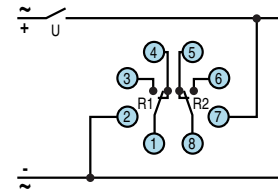
TMR 48 U



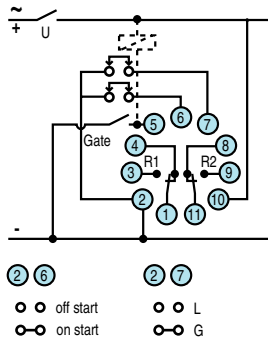
TMR 48 A



TMR 48 X

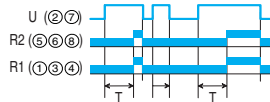


TMR 48 L

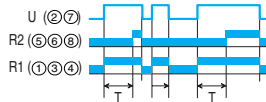


Curves

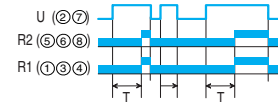
Function A (TMR 48 A) Delay on energisation



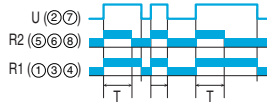
Function A1 Delay on energisation



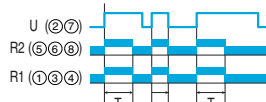
Function A2 Delay on energisation



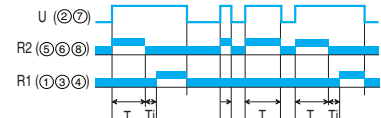
Function H1 Timing on energisation



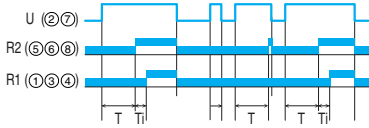
Function H2 Timing on energisation



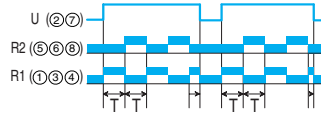
Function Q1 Star-delta



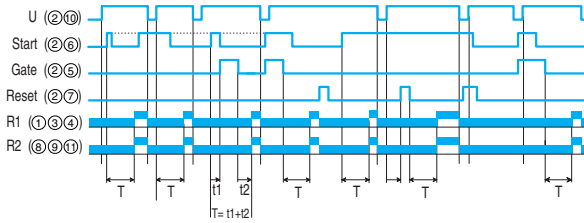
Function Q2
Star-delta 2



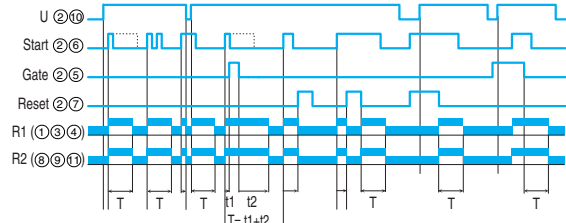
Function D-Di
Cyclic timing : symetric recycler



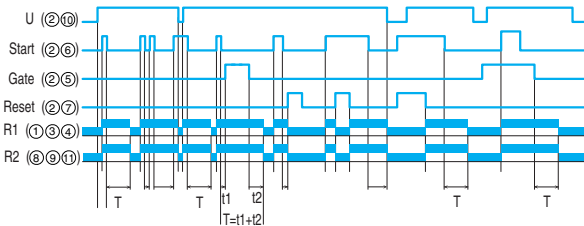
Function A (TMR 48 U)
Delay on energisation



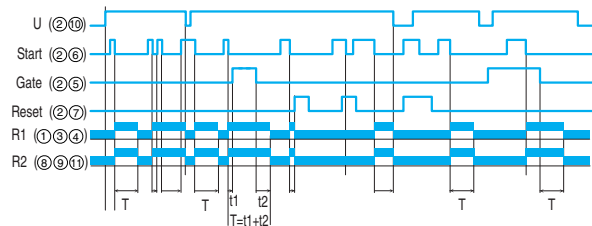
Function B
Timing on impulse



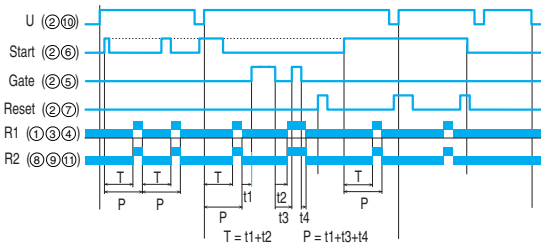
Function C
Timing after impulse- Delay off with constant supply



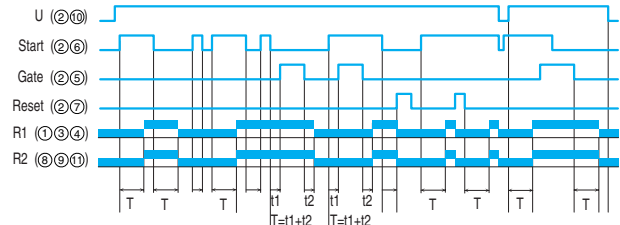
Function W
Timing after impulse on control contact



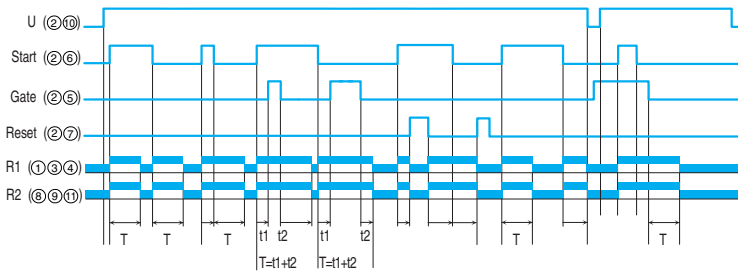
Function G
Cyclic function



Function Ac
Timing after closing and opening of control contact



Function Bw
Pulse output (adjustable)



Function L/Li - G/Gi
Cyclic timing : asymetrical recycler

