



Intense double flash with low power consumption

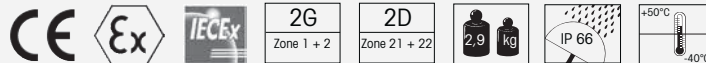
- Gas applications: Zones 1 and 2
- Dust applications: Zones 21 and 22
- Intense double flash with low power consumption
- Salt water resistant

- Integral wire guard (VA stainless steel)
- Effective explosion protection even at extreme temperatures (-50°C to +50°C, with accessory)
- Integrated mounting bracket (VA steel)

i TECHNICAL SPECIFICATIONS:

Life duration up to 50,000 hrs

Dimensions (Ø x Height):	139 mm x 214 mm
Housing:	Black coated aluminium, salt water resistant
Lens:	Reinforced borosilicate glass
Fixing:	Wall, base and ceiling mounting Integrated mounting bracket, VA steel
Connection:	CAGE CLAMP max. 2.5 mm ²
Cable entry:	Cable gland M20 x 1.5 mm Cable diameter 6-13 mm



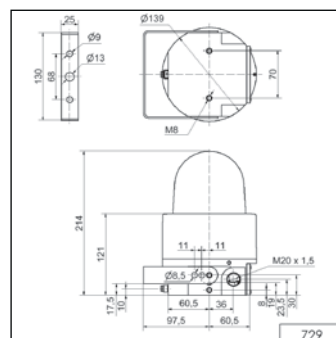
🛒 ORDER SPECIFICATIONS:

Voltage	24 V DC	115 V/230 V AC
Current consumption	140 mA	140 mA at 230 V AC
Explosion protection	Ex II 2G Ex de IIC T6 Gb	Ex II 2G Ex de IIC T5 Gb
Approval	Ex II 2D Ex tb IIIC T80°C Db IP 66	Ex II 2D Ex tb IIIC T95°C Db IP 66
red	729 150 55	729 150 68
yellow	729 350 55	729 350 68

🏠 ACCESSORIES:

Ex screw plug M 20 x 1.5 mm	975 729 02
Ex wire guard, VA steel, stainless	975 729 03
Ex cable gland M 20 x 1.5 mm	975 729 01
Ex cable gland M 20 x 1.5 mm, metal To expand the temperature range from -40 °C to -50 °C	975 729 04

📏 TECHNICAL DIAGRAM:



Additional protection with the robust wire guard (accessory)