



motor with gear  
motorreductor

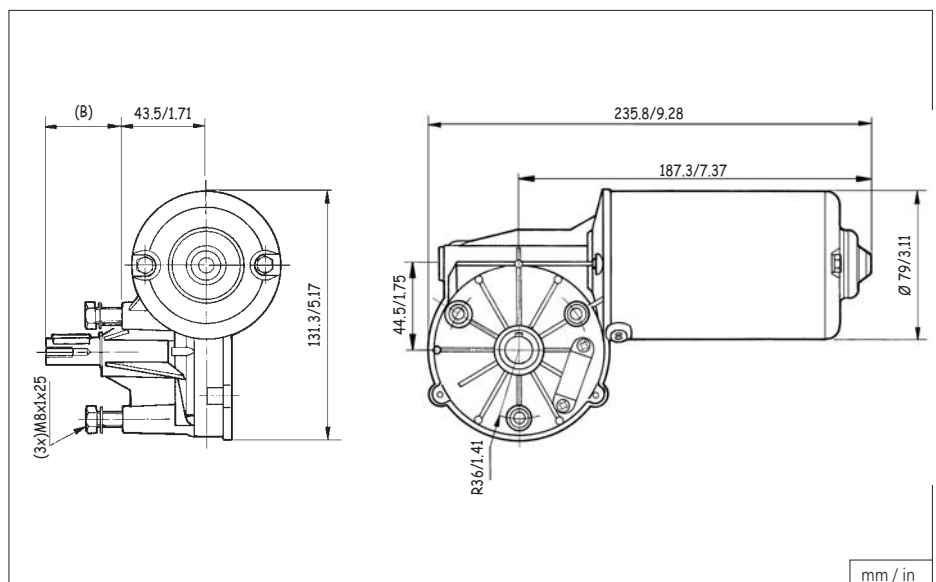
| Reference number<br>Referencia | Nominal voltage<br>Tensión nominal | Nominal torque<br>Par nominal | Nominal speed<br>Velocidad nominal | Nominal current<br>Corriente nominal | Starting torque<br>Par de arranque | Starting current<br>Corriente de Arranque | Shaft<br>Eje | Connections<br>Conexiones | Wiring diag.<br>Esq. eléct. | Transmission ratio<br>Relación de reducción | Approximate weight<br>Peso aproximado | Grado de estanqueidad<br>Watertightness | Wheel material<br>Material rueda | Curve<br>Curva |
|--------------------------------|------------------------------------|-------------------------------|------------------------------------|--------------------------------------|------------------------------------|---|--------------|---------------------------|-----------------------------|---|---------------------------------------|---|----------------------------------|----------------|
|                                | <b>Un<br/>(V)</b>                  | <b>Mn<br/>(N.m./Lbf.in)</b>   | <b>nn<br/>(r.p.m.)</b>             | <b>In<br/>(A)</b>                    | <b>Ma<br/>(N.m./Lbf.in)</b>        | <b>Ia<br/>(A)</b>                         |              |                           |                             | <b>i</b>                                    | <b>P<br/>(kg / Lb.t)</b>              | <b>IP</b>                               |                                  |                |
| 258.1710.20.00                 | 12                                 | 15 / 133                      | 25                                 | 10                                   | 80 / 708                           | 42  | E36          | C34                       | F2                          | 52:1  | 3.00 / 8                              | IP53                                    | PLA                              | 18             |
| 258.1710.30.00                 | 24                                 | 15 / 133                      | 25                                 | 5                                    | 80 / 708                           | 21  | E36          | C34                       | F2                          | 52:1  | 3.00 / 8                              | IP53                                    | PLA                              | 18             |
| 258.3710.20.00                 | 12                                 | 15 / 133                      | 25                                 | 10                                   | 80 / 708                           | 42  | E36          | C34                       | EE2                         | 52:1  | 3.00 / 8                              | IP53                                    | PLA                              | 18             |
| 258.3710.30.00                 | 24                                 | 15 / 133                      | 25                                 | 5                                    | 80 / 708                           | 21  | E36          | C34                       | EE2                         | 52:1  | 3.00 / 8                              | IP53                                    | PLA                              | 18             |
| 258.3712.20.00                 | 12                                 | 12 / 106                      | 40                                 | 12                                   | 80 / 708                           | 55  | E36          | C34                       | EE2                         | 52:1  | 3.00 / 8                              | IP53                                    | PLA                              | 19             |
| 258.3712.30.00                 | 24                                 | 12 / 106                      | 40                                 | 6                                    | 80 / 708                           | 32  | E36          | C34                       | EE2                         | 52:1  | 3.00 / 8                              | IP53                                    | PLA                              | 19             |
| 258.9026.20.00                 | 12                                 | 12 / 106                      | 40                                 | 12                                   | 80 / 708                           | 55  | E36          | C34                       | EE2                         | 52:1  | 3.00 / 8                              | IP53                                    | CEL                              | 19             |
| 258.9026.30.00                 | 24                                 | 12 / 106                      | 40                                 | 6                                    | 80 / 708                           | 32  | E36          | C34                       | EE2                         | 52:1  | 3.00 / 8                              | IP53                                    | CEL                              | 19             |

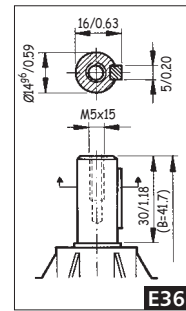
DOGA can develop for you  
on this series a customised version:

DOGA puede desarrollar para usted  
una versión a medida:

- ▼
- SELF-LOCKING / AUTO-BLOQUEO
- BRONZE WHEEL / RUEDA DE BRONCE
- RESINBONDED WHEEL / RUEDA DE CELOTEX
- FRONT & REAR SHAFT / EJE DELANTERO Y POSTERIOR
- HALL SENSOR / SENSOR HALL
- ▲

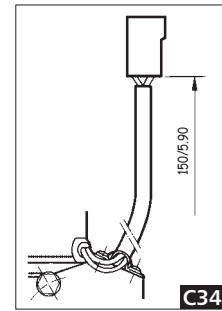
and many more / y mucho más  
please contact us / por favor contactenos





111

CONNECTION - CONEXIÓN

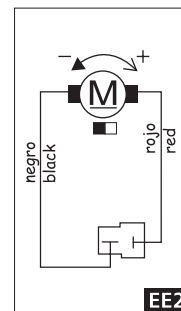


119

210

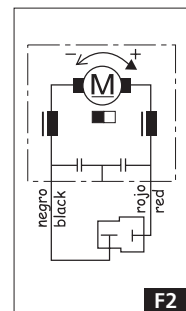
258

WIRING DIAGRAM - ESQUEMA ELÉCTRICO



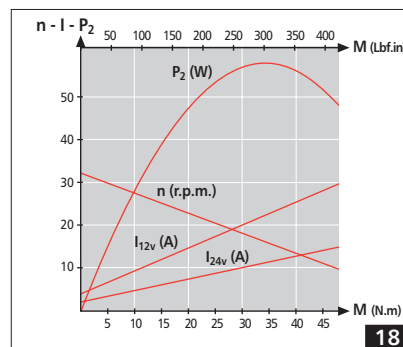
259

316



319

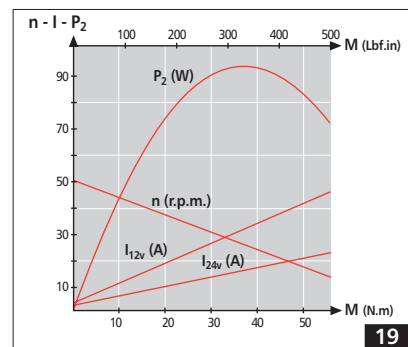
CURVES - CURVAS



162

168

169



260

269