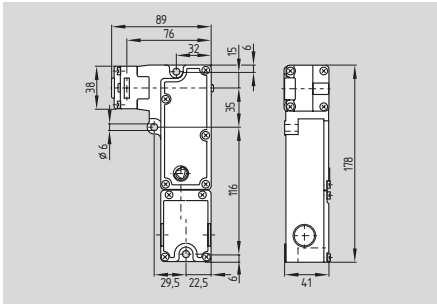


Solenoid interlocks

AZM 190



- Thermoplastic enclosure
- Manual or Emergency release
- Long life
- Power to unlock/power to lock principle
- Slim design, particularly suitable for fitting on hinged doors, aluminium profiles and fencing
- Actuating head can be repositioned by 4 x 90°
- Sealing mechanism to prevent the ingress of dirt
- 2 cable entries M20 x 1.5
- Wiring compartment
- Holding force 1750 N

Technical data

Standards: IEC/EN 60947-5-1
BG-GS-ET-19

Enclosure: glass-fibre reinforced thermoplastic

Actuator and locking bolt: zinc-plated steel / zinc diecast, chromated

Protection class: IP 67 to EN 60529

Contact material: silver

Contact type: change-over contact, double break, galvanically separated contact bridges

Switching system: IEC 60947-5-1 slow action, NC contact with positive break

Termination: screw terminals

Cable section: max. 1.5 mm² (incl. conductor ferrules)

Cable entry: 2 x M20 x 1.5

U_{imp}: 2.5 kV

U_i: 250 V

I_{the}: 10 A

Utilisation category: AC-15, DC-13

I_e/U_e: 8 A / 230 VAC
5 A / 24 VDC

Max. fuse rating: 10 A gL/gG D-fuse

Positive break travel: 2 x 3.5 mm

Positive break force: 20 N

Magnet: 100% ED

U_s: 24 VDC

110 VAC, 50/60 Hz
230 VAC, 50/60 Hz

Power consumption: max. 8.5 W

Ambient temperature: 0 °C ... + 50 °C

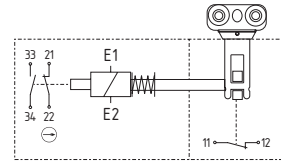
Mechanical life: 2 million operations

F_{max}: 1750 N

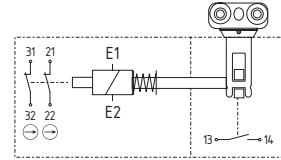
Latching force: 20 N

Contact variants

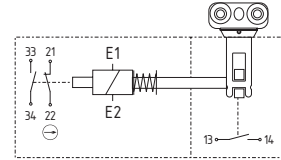
Power to unlock
1 NC
1 NO / 1 NC



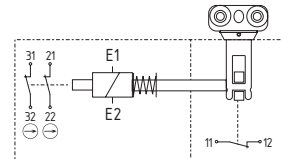
1 NO
2 NC



1 NO
1 NO / 1 NC



1 NC
2 NC



Approvals

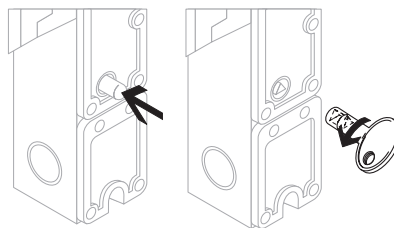


Ordering details

AZM 190-①rk②-③

No.	Replace	Description
①	11/01	Magnet: Actuator: 1NO/1NC 1NC
	11/10	1NO/1NC 1NO
	02/10	2NC 1NO
	02/01	2NC 1NC
②	a	Power to unlock
		Power to lock
③	24VDC	Us 24 VDC
	24VAC	Us 24 VAC
	48VAC	Us 48 VAC
	110VAC	Us 110 VAC
	230VAC	Us 230 VAC

Note



Emergency release (left)

- For cases of danger
- Mounting only within the guarded area

Manual release (right)

- For manual release using triangular key M3 (included in delivery)
- For maintenance, setting-up, etc.

Note

Other product variants:

- for safety fences in aluminium profil systems
- actuator with reduced mounting depth
- preferably for inside mounting
- with emergency exit and manual release
- 4 monitoring contacts
- for left-hand and right-hand hinged guard doors

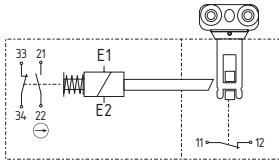
List T/03 ELAN, Wettenberg

Solenoid interlocks

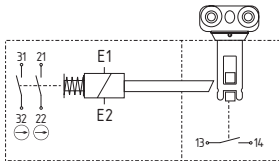
Contact variants

Power to lock

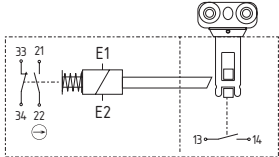
1 NC
1 NO / 1 NC



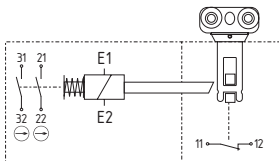
1 NO
2 NC



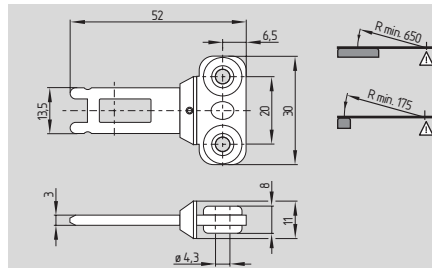
1 NO
1 NO / 1 NC



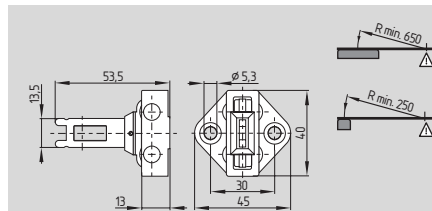
1 NC
2 NC



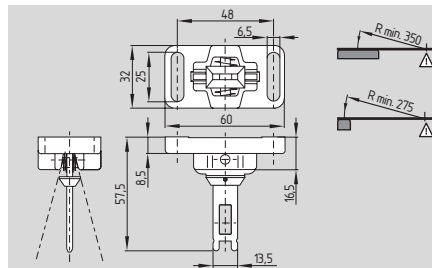
System components



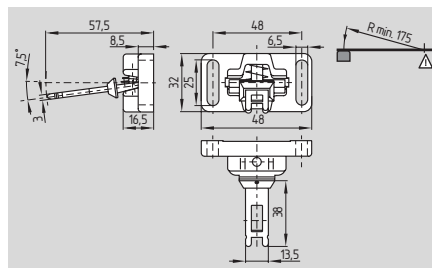
Straight actuator AZM 190-B1



Actuator to front mounting AZM 190-B5

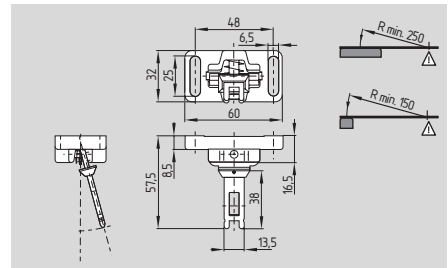


Flexible actuator AZM 190-B3/2x15

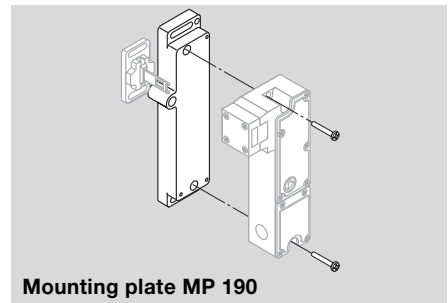


Flexible actuator AZM 190-B3/7,5

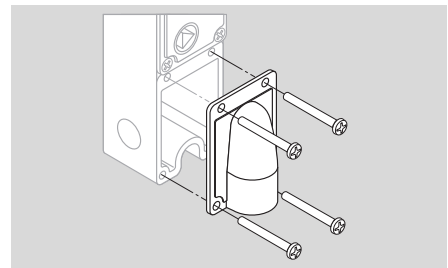
System components



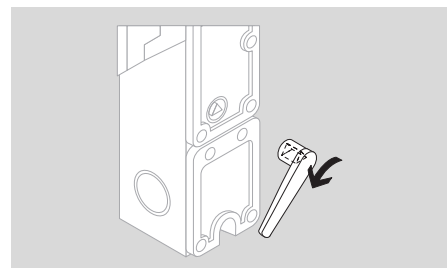
Flexible actuator AZM 190-B3/15



Mounting plate MP 190



Axial cable entry ZPG 190



Triangular key M3-a

Note

Contact symbols shown for the closed condition of the guard device. Interlocks with power to lock principle may only be used in special cases after a thorough evaluation of the accident risk, since the guarding device can immediately be opened on failure of the electrical power supply or when the main switch is opened.

Actuators and connector plugs must be ordered separately.

Ordering details

Straight actuator
to front mounting
Flexible actuator
Flexible actuator

AZM 190-B1
AZM 190-B5
AZM 190-B3/2x15
AZM 190-B3/7,5

Flexible actuator

AZM 190-B3/15

Mounting plate
Axial cable entry
Triangular key M3-a
(M3 triangular key is
included in delivery)

MP 190
ZPG 190
1144779